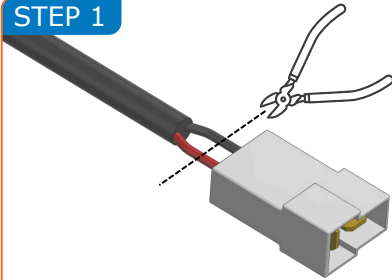


You have the option to either retain your existing OEM connector or choose to rewire your vehicles harness to use the Revotec fan connector (RTB-2). This kit provides both types of connection.

Before commencing any re-wiring, test and note the polarity of the original fan and wiring harness. The supplied fan should operate as a suction fan. Test fully before starting the vehicle engine.

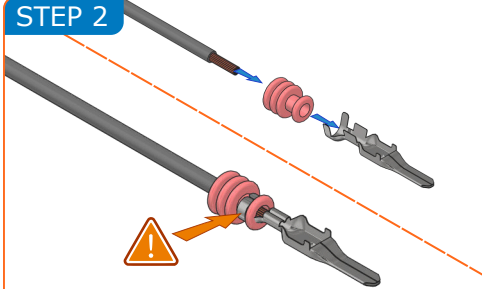
FAN CONVERSION TO MAZDA LOOM

STEP 1



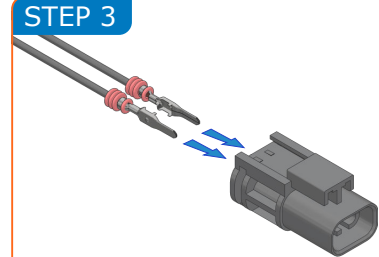
Using wire cutters, remove the white plug from the supplied fan.

STEP 2



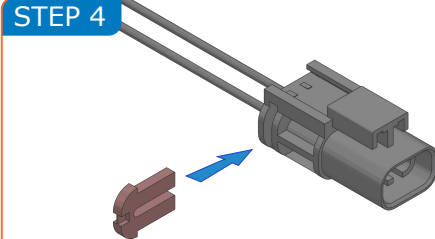
Slide the cables through the supplied rubber seals before removing ¼" (6mm) of shroud to reveal the wire core. Crimp the male spade connectors, noting the rubber seal position, as shown.

STEP 3



Noting the polarity, insert the crimped terminals into the supplied NB connector. Ensure the cables are fully located.

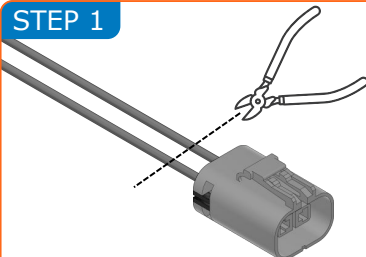
STEP 4



Install the red locking tab to secure the cables in place.

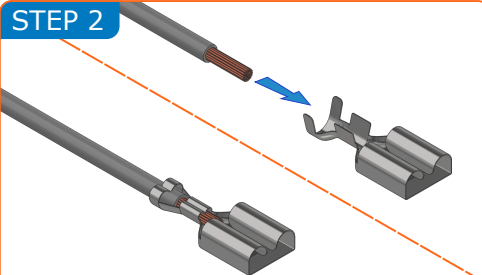
LOOM CONVERSION TO REVOTEC FAN

STEP 1



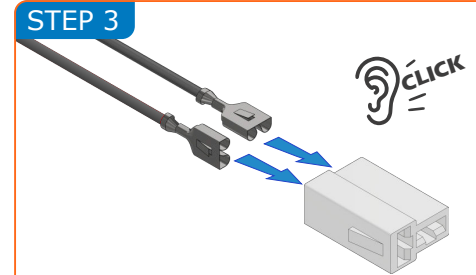
Using wire cutters, remove the OEM plug from the vehicle wiring loom.

STEP 2



Remove ¼" (6mm) of cable shroud to reveal the wire core. Crimp the female spade connectors as shown.

STEP 3



Noting the polarity, insert the crimped spade terminals into the supplied RTB-2 connector as shown. Ensure the cables are fully located - retaining catches will click into place.

IMPORTANT NOTES

Installations are to be undertaken by a competent vehicle mechanic.
If in doubt, consult a qualified professional.
Always work in a safe environment and wear PPE where necessary.
Disconnect the vehicle battery before beginning installation.
Failure to comply with the above may result in your warranty being void.